

Gainsborough's FAMILY ALBUM

February 23–June 9, 2019

Thomas Gainsborough, English, 1727–1788
John Gainsborough, the Artist's Father, c. 1746–8
Oil on canvas
61.3 × 51.1 cm (24 1/8 × 20 1/8 in.)
frame: 70.5 × 60.3 × 5.4 cm (27 3/4 × 23 3/4 × 2 1/8 in.)
Corcoran Collection (Edward C. and Mary Walker Collection), CGA.37.18



Thomas Gainsborough, English, 1727–1788
The Artist with his Wife Margaret and Eldest Daughter Mary, 1748?
Oil on canvas
92.1 × 70.5 cm (36 1/4 × 27 3/4 in.)
frame: 105.5 × 85 × 8 cm (41 9/16 × 33 7/16 × 3 1/8 in.)
The National Gallery, London. Acquired under the acceptance-in-lieu scheme at the wish of Sybil, Marchioness of Cholmondeley, in memory of her brother, Sir Philip Sassoon, 1994



Thomas Gainsborough, English, 1727–1788
John Gainsborough, the Artist's Father, 1751
Pencil
10 × 7.5 cm (3 15/16 × 2 15/16 in.)
frame: 20.5 × 19 × 3.5 cm (8 1/16 × 7 1/2 × 1 3/8 in.)
Gainsborough's House, Sudbury, Suffolk



Thomas Gainsborough, English, 1727–1788
Self-portrait, c. 1754
Oil on canvas
58.4 × 48.3 cm (23 × 19 in.)
frame: 80 × 70 cm (31 1/2 × 27 9/16 in.)
Private Collection



Thomas Gainsborough, English, 1727–1788
Self-portrait, 1754?
Pencil on laid paper
28 × 21 cm (11 × 8 1/4 in.)
frame: 52 × 44 cm (20 1/2 × 17 5/16 in.)
Andrew Clayton-Payne



Thomas Gainsborough, English, 1727–1788
Henry Burrough, the Artist's Cousin, c. 1756
Oil on canvas
76 × 64 cm (29 15/16 × 25 3/16 in.)
Guildhall Art Gallery, City of London



Thomas Gainsborough, English, 1727–1788
Mary Gainsborough, the Artist's Daughter, c. 1758–9
Oil on canvas
36 × 31 cm (14 3/16 × 12 3/16 in.)
frame: 54 × 48.8 × 6 cm (21 1/4 × 19 3/16 × 2 3/8 in.)
Private Collection



Thomas Gainsborough, English, 1727–1788
Self-portrait, c. 1758–9
Oil on canvas
76.2 × 63.5 cm (30 × 25 in.)
frame: 94.8 × 81.7 cm (37 5/16 × 32 3/16 in.)
National Portrait Gallery, London. Accepted in lieu of tax by H.M. Government and allocated to the Gallery, 1965



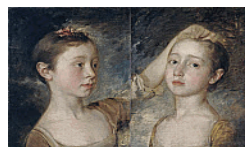
Thomas Gainsborough, English, 1727–1788
Susan Gardiner, the Artist's Niece, c. 1758–9
Oil on canvas
61.9 × 51.1 cm (24 3/8 × 20 1/8 in.)
frame: 76.2 × 66.2 × 6.1 cm (30 × 26 1/16 × 2 3/8 in.)
Yale Center for British Art, Paul Mellon Collection



Thomas Gainsborough, English, 1727–1788
Mary and Margaret Gainsborough, the Artist's Daughters, Playing with a Cat, c. 1760–1
Oil on canvas
75.6 × 62.9 cm (29 3/4 × 24 3/4 in.)
frame: 92.5 × 80.5 × 9.2 cm (36 7/16 × 31 11/16 × 3 5/8 in.)
The National Gallery, London. Bought, 1923



Thomas Gainsborough, English, 1727–1788
Mary and Margaret Gainsborough, the Artist's Daughters, c. 1760–1
Oil on canvas
40.6 × 58.4 cm (16 × 23 in.)
frame: 57.2 × 78.7 × 6.4 cm (22 1/2 × 31 × 2 1/2 in.)
Victoria and Albert Museum, London. Bequeathed by John Forster



Thomas Gainsborough, English, 1727–1788
Margaret Gainsborough, the Artist's Daughter, as a Gleaner, c. 1760–1
Oil on canvas
73 × 63 cm (28 3/4 × 24 13/16 in.)
frame: 97 × 84.5 × 7 cm (38 3/16 × 33 1/4 × 2 3/4 in.)
The Ashmolean Museum, Oxford. Purchased with the assistance of a gift in memory of Helen, Henry and Marius Winslow and the Victoria and Albert Museum Purchase Grant Fund, 1975



Thomas Gainsborough, English, 1727–1788
Tristram and Fox, 1760s
Black chalk and stump, heightened with white, on prepared paper
21.2 × 18 cm (8 3/8 × 7 1/16 in.)
frame: 42.5 × 39.6 × 4.5 cm (16 3/4 × 15 9/16 × 1 3/4 in.)
Private Collection



Thomas Gainsborough, English, 1727–1788
Study for Mary and Margaret Gainsborough, the Artist's Daughters, at their Drawing, c. 1763–4
Black chalk on blue-grey paper
37.7 × 26.2 cm (14 13/16 × 10 5/16 in.)
Gainsborough's House, Sudbury, Suffolk



Thomas Gainsborough, English, 1727–1788
Mary and Margaret Gainsborough, the Artist's Daughters, at their Drawing, c. 1763–4
Oil on canvas
127.3 × 101.7 cm (50 1/8 × 40 1/16 in.)
frame: 157 × 133 × 13 cm (61 13/16 × 52 3/8 × 5 1/8 in.)
Worcester Art Museum, Worcester, Massachusetts, USA. Museum purchase, 1917.181



Thomas Gainsborough, English, 1727–1788
"The Pitminster Boy", late 1760s
Oil on canvas
60.8 × 50.4 cm (23 15/16 × 19 13/16 in.)
Private collection, on loan to Gainsborough's House, Sudbury, Suffolk



Thomas Gainsborough, English, 1727–1788
Lucy Audley, the Artist's Cousin's Mother-in-Law, late 1760s
Oil on canvas
73 × 60.6 cm (28 3/4 × 23 7/8 in.)
frame: 95.3 × 83.8 cm (37 1/2 × 33 in.)
USC Fisher Museum of Art, Los Angeles, Elizabeth Holmes Fisher Collection



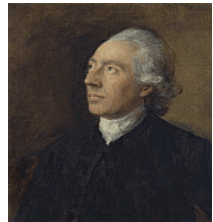
Thomas Gainsborough, English, 1727–1788
Margaret Gainsborough, the Artist's Daughter, early 1770s
Oil on canvas
75.6 × 62.9 cm (29 3/4 × 24 3/4 in.)
frame: 101 × 87 × 11.3 cm (39 3/4 × 34 1/4 × 4 7/16 in.)
Tate: Presented by the family of Richard J. Lane 1896



Thomas Gainsborough, English, 1727–1788
John Gainsborough ("Scheming Jack"), the Artist's Brother, early 1770s
Oil on canvas
72.4 × 59.7 cm (28 1/2 × 23 1/2 in.)
frame: 90 × 77 × 5 cm (35 7/16 × 30 5/16 × 1 15/16 in.)
Private Collection



Thomas Gainsborough, English, 1727–1788
Humphrey Gainsborough, the Artist's Brother, early 1770s
Oil on canvas
59.7 × 49.5 cm (23 1/2 × 19 1/2 in.)
frame: 77.5 × 66.8 × 5.8 cm (30 1/2 × 26 5/16 × 2 5/16 in.)
Yale Center for British Art, Paul Mellon Collection



Thomas Gainsborough, English, 1727–1788
Gainsborough Dupont, the Artist's Nephew, c. 1770–5
Oil on canvas
44.5 × 36.2 cm (17 1/2 × 14 1/4 in.)
frame: 59 × 50 × 9 cm (23 1/4 × 19 11/16 × 3 9/16 in.)
Tate: Bequeathed by Lady d'Abernon 1954



Johann Zoffany, German, 1733–1810, active in England
Thomas Gainsborough, c. 1772
Oil on canvas
19.7 × 17.1 cm (7 3/4 × 6 3/4 in.)
frame: 31.5 × 29 × 5 cm (12 3/8 × 11 7/16 × 1 15/16 in.)
Tate: Presented by the family of Richard J. Lane 1896



Thomas Gainsborough, English, 1727–1788
Edward Richard Gardiner, the Artist's Nephew, c. 1772–4
Oil on canvas
62.2 × 50.2 cm (24 1/2 × 19 3/4 in.)
frame: 79 × 66 × 8.2 cm (31 1/8 × 26 × 3 1/4 in.)
Tate: Presented by Miss Marjorie Gainsborough Gardiner 1965



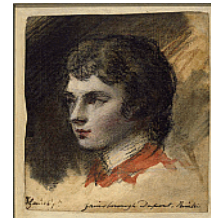
Thomas Gainsborough, English, 1727–1788
completed by Gainsborough Dupont, British, 1754–1797
Self-portrait, mid-1770s and 1790
Oil on canvas
76.6 × 63.5 cm (30 3/16 × 25 in.)
frame: 96.2 × 83.6 × 6 cm (37 7/8 × 32 15/16 × 2 3/8 in.)
The Samuel Courtland Trust. The Courtauld Gallery, London



Thomas Gainsborough, English, 1727–1788
Gainsborough Dupont, the Artist's Nephew, 1773
Oil on canvas
51.6 × 38.8 cm (20 5/16 × 15 1/4 in.)
frame: 63.3 × 50.5 × 3.5 cm (24 15/16 × 19 7/8 × 1 3/8 in.)
Waddesdon (Rothschild Family)



Thomas Gainsborough, English, 1727–1788
Gainsborough Dupont, the Artist's Nephew, c. 1773
Black chalk and stump, colored chalks and watercolor, varnished
17.1 × 14.3 cm (6 3/4 × 5 5/8 in.)
Victoria and Albert Museum, London. Bequeathed by Claude D. Rotch



Thomas Gainsborough, English, 1727–1788
Mary and Margaret Gainsborough, the Artist's Daughters, c. 1774
Oil on canvas
248.7 × 150 cm (97 15/16 × 59 1/16 in.)
frame: 269.7 × 181 × 15 cm (106 3/16 × 71 1/4 × 5 7/8 in.)
Private Collection



Thomas Gainsborough, English, 1727–1788
Gainsborough Dupont, the Artist's Nephew, c. 1775–6
Oil on canvas
76.2 × 63.2 cm (30 × 24 7/8 in.)
frame: 98.1 × 85.4 × 7.6 cm (38 5/8 × 33 5/8 × 3 in.)
Memphis Brooks Museum of Art, Memphis, Tennessee; Gift of Mr. and Mrs. A. Moss 61.173



Thomas Gainsborough, English, 1727–1788
Tristram and Fox [?], c. 1775–85
Oil on canvas
61 × 50.8 cm (24 × 20 in.)
frame: 80 × 70.2 × 8 cm (31 1/2 × 27 5/8 × 3 1/8 in.)
Tate: Presented by the family of Richard J. Lane 1896



Thomas Gainsborough, English, 1727–1788

Mary Gainsborough, the Artist's Daughter, 1777

Oil on canvas

77.5 × 64.8 cm (30 1/2 × 25 1/2 in.)

frame: 100 × 87.8 × 12.8 cm (39 3/8 × 34 9/16 × 5 1/16 in.)

Tate: Bequeathed by Sir Otto Beit 1945



Thomas Gainsborough, English, 1727–1788

Margaret Gainsborough, the Artist's Wife, c. 1777

Oil on canvas

76.6 × 63.8 cm (30 3/16 × 25 1/8 in.)

frame: 102.5 × 90 × 9 cm (40 3/8 × 35 7/16 × 3 9/16 in.)

The Samuel Courtauld Trust. The Courtauld Gallery, London



Thomas Gainsborough, English, 1727–1788

Margaret Gainsborough, the Artist's Daughter, Playing a Lute, c. 1777

Oil on canvas

frame: 109.8 × 90.2 × 7.5 cm (43 1/4 × 35 1/2 × 2 15/16 in.)

Private Collection



Thomas Gainsborough, English, 1727–1788

Margaret Gainsborough, the Artist's Wife, c. 1777–8

Oil on millboard

24 × 22.2 cm (9 7/16 × 8 3/4 in.)

frame: 38 × 36 × 7 cm (14 15/16 × 14 3/16 × 2 3/4 in.)

Anthony Mould, London



Thomas Gainsborough, English, 1727–1788

Philip Dupont, the Artist's Brother-in-law, c. 1777–9

Oil on canvas

76.2 × 62.5 cm (30 × 24 5/8 in.)

frame: 94.5 × 82.6 × 8 cm (37 3/16 × 32 1/2 × 3 1/8 in.)

Lent by The Syndics of the Fitzwilliam Museum, University of Cambridge. Given by Charles Fairfax Murray, 1918



Thomas Gainsborough, English, 1727–1788

Sarah Dupont, the Artist's Sister, c. 1777–9

Oil on canvas

77.2 × 64.5 cm (30 3/8 × 25 3/8 in.)

frame: 96.5 × 83.8 × 7 cm (38 × 33 × 2 3/4 in.)

The Art Institute of Chicago, Charles H. and Mary F. S. Worcester Collection; through prior gifts of Mr. and Mrs. Denison B. Hull, Mr. and Mrs. William Kimball, and Mrs. Charles McCulloch, 1987.139



Thomas Gainsborough, English, 1727–1788
Unidentified Gentleman, traditionally called Philip Dupont, c. 1780–2
Oil on canvas
76.2 × 63.5 cm (30 × 25 in.)
Kindly lent by Restoration House, Rochester, Kent



Thomas Gainsborough, English, 1727–1788
Susanna Gardiner, the Artist's Sister, c. 1780–5
Oil on canvas
75.6 × 62.9 cm (29 3/4 × 24 3/4 in.)
frame: 94.7 × 82.4 × 9.3 cm (37 5/16 × 32 7/16 × 3 11/16 in.)
Tate: Presented by Miss Marjorie Gainsborough Gardiner 1965



Thomas Gainsborough, English, 1727–1788
Study of an Elderly Woman, perhaps the Artist's Wife, c. 1780–5
Black chalk heightened with white chalk on beige laid paper
19.5 × 13.7 cm (7 11/16 × 5 3/8 in.)
frame: 51.8 × 39.1 cm (20 3/8 × 15 3/8 in.)
Yale Center for British Art, Paul Mellon Collection



Thomas Gainsborough, English, 1727–1788
Margaret Gainsborough, the Artist's Wife, mid to late 1780s
Oil on paper laid down on panel
11.2 × 8.5 cm (4 7/16 × 3 3/8 in.)
On loan from Ipswich Borough Council – Colchester and Ipswich Museums



Thomas Gainsborough, English, 1727–1788
Margaret Gainsborough, the Artist's Wife, mid to late 1780s
Oil on book board
15.2 × 11.4 cm (6 × 4 1/2 in.)
frame: 19 × 16 × 2 cm (7 1/2 × 6 5/16 × 13/16 in.)
Gainsborough's House, Sudbury, Suffolk



Thomas Gainsborough, English, 1727–1788
Self-portrait, c. 1786
Oil on canvas
76.2 × 63.5 cm (30 × 25 in.)
frame: 79.4 × 91.5 × 5.1 cm (31 1/4 × 36 × 2 in.)
The Earl of Leicester and the Trustees of the Holkham Estate



Thomas Gainsborough, English, 1727–1788
Self-portrait, c. 1787
Oil on canvas
77.3 × 64.5 × 2.2 cm (30 7/16 × 25 3/8 × 7/8 in.)
frame: 94 × 82.2 × 10 cm (37 × 32 3/8 × 3 15/16 in.)
Royal Academy of Arts, London. Given by Miss Margaret Gainsborough, 1808



Francesco Bartolozzi, Italian, 1727–1815
after Thomas Gainsborough, English, 1727–1788
Self-portrait of Thomas Gainsborough, 1797
Black and red chalk with graphite and grey wash
21 × 16.5 cm (8 1/4 × 6 1/2 in.)
National Portrait Gallery, London



Francesco Bartolozzi, Italian, 1727–1815
after Thomas Gainsborough, English, 1727–1788
Self-portrait of Thomas Gainsborough, 1798
Stipple engraving
25.2 × 20.1 cm (9 15/16 × 7 15/16 in.)
National Portrait Gallery, London. Purchased with help from the Friends of the National Libraries and the Pilgrim Trust, 1966

