

# In the Dark: Night Prints from Dürer to Goya

William Baillie, British, 1723 - 1793  
after Gerrit Dou, Dutch, 1613 - 1675  
*Dutch Interior by Candlelight*, 1774  
Mezzotint on thin pink laid Japanese paper  
plate: 35.1 x 25 cm. (13 13/16 x 9 13/16 in.)  
sheet: 35.7 x 25.6 cm (14 1/16 x 10 1/16 in.)  
Museum purchase, Felton Gibbons Fund



Albrecht Dürer, Nuremberg 1471–1528 Nuremberg  
*Betrayal of Christ from The Small Passion*, ca. 1509–11  
Woodcut  
sheet trimmed to block: 13.2 x 10.2 cm. (5 3/16 x 4 in.)  
Gift of John P. Poe, Class of 1922, in memory of Albert M. Friend Jr., Class of 1915



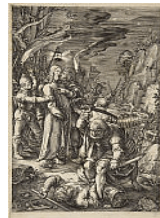
Albrecht Dürer, Nuremberg 1471–1528 Nuremberg  
*Betrayal of Christ, from The Engraved Passion*, 1508  
Engraving  
sheet trimmed to plate: 11.8 x 7.5 cm (4 5/8 x 2 15/16 in.)  
Gift of David H. McAlpin, Class of 1920, and Mrs. McAlpin, in memory of Professor Clifton R. Hall



Giorgio Ghisi, Italian, 1520 - 1582  
*Allegory of Life*, 1561  
Engraving  
sheet trimmed to plate: 38 x 54 cm. (14 15/16 x 21 1/4 in.)  
Museum purchase, by exchange, Caroline G. Mather Fund



Hendrick Goltzius, Dutch, 1558–1617  
*Betrayal of Christ, from The Passion*, 1598  
Engraving  
plate: 20 x 13.2 cm (7 7/8 x 5 3/16 in.)  
sheet: 20.6 x 13.2 cm (8 1/8 x 5 3/16 in.)  
Bequest of Junius S. Morgan, Class of 1888



Hendrik Goudt, Dutch, 1585 - 1630  
after Adam Elsheimer, German, 1578 - 1610  
*Ceres and Proserpine*  
Engraving  
sheet trimmed to plate: 32.1 x 24.7 cm (12 5/8 x 9 3/4 in.)  
Bequest of Junius S. Morgan, Class of 1888



Francisco José de Goya y Lucientes, Spanish, 1746–1828  
*Símanece, nos vamos* (*When day breaks we will be off*). Plate 71 of *Los Caprichos*  
Etching, burnished aquatint, and burin  
plate: 19.7 x 14.8 cm. (7 3/4 x 5 13/16 in.)  
sheet: 29 x 19.1 cm (11 7/16 x 7 1/2 in.)  
Gift of Frank Jewett Mather Jr..



Francisco José de Goya y Lucientes, Spanish, 1746–1828  
*Mala noche* (*Bad night*). Plate 36 of *Los Caprichos*, 1799  
Etching and burnished aquatint  
plate: 21.5 x 15.2 cm. (8 7/16 x 6 in.)  
sheet: 31.5 x 22.3 cm. (12 3/8 x 8 3/4 in.)  
Laura P. Hall Memorial Collection



Valentine Green, British, 1739–1813  
after Joseph Wright of Derby, British, 1734–1797  
*A Philosopher Shewing an Experiment on the Air Pump*, 1769  
Mezzotint  
image: 48.4 x 58.7 cm. (19 1/16 x 23 1/8 in.)  
sheet trimmed to plate: 44.8 x 58.7 cm. (17 5/8 x 23 1/8 in.)  
frame: 70.5 x 80.5 x 2.3 cm  
Museum purchase, Fowler McCormick, Class of 1921, Fund



William Hogarth, British, 1697–1764  
*Night* from the series *The Four Times of the Day*, 1738  
Etching and engraving  
plate: 49.1 x 40.8 cm (19 5/16 x 16 1/16 in.)  
sheet: 65.5 x 49 cm (25 13/16 x 19 5/16 in.)  
Gift of Mrs. William H. Walker II



Crispin de Passe the Elder, Dutch, 1564–1637  
*Proserphina* (*Night*). Plate 4 from *Four Parts of the Day*  
Engraving  
sheet trimmed to plate: 21.8 x 12.5 cm. (8 9/16 x 4 15/16 in.)  
Bequest of Junius S. Morgan, Class of 1888



Rembrandt van Rijn, Dutch, 1606–1669  
*Adoration of the Shepherds with the lamp*, ca. 1654  
Etching  
sheet trimmed to plate: 10.8 x 13.3 cm. (4 1/4 x 5 1/4 in.)  
Bequest of Jessie P. Frothingham



Rembrandt van Rijn, Dutch, 1606–1669  
*Descent from the Cross by Torchlight*, 1654  
Etching and drypoint  
sheet trimmed to plate: 21 x 16.3 cm. (8 1/4 x 6 7/16 in.)  
Gift of David H. McAlpin, Class of 1920, and Mrs. McAlpin, in memory of Professor Clifton R. Hall



Rembrandt van Rijn, Dutch, 1606–1669

*Agony in the Garden*, ca. 1657

Etching and drypoint

sheet trimmed to plate: 11.2 x 8.4 cm. (4 7/16 x 3 5/16 in.)

Gift of David H. McAlpin, Class of 1920, and Mrs. McAlpin, in memory of Professor Clifton R. Hall



Jan van de Velde, Dutch, ca. 1593–1641

after Pieter Molyn, Dutch, 1595 - 1661

*Shrove Tuesday*

Engraving

plate: 22.1 x 17.1 cm. (8 11/16 x 6 3/4 in.)

sheet: 23.6 x 19.3 cm. (9 5/16 x 7 5/8 in.)

Museum purchase, Laura P. Hall Memorial Fund

