

CÉZANNE

In addition to Cézanne's oil painting *Mont Sainte-Victoire*, the exhibition includes a pair of watercolors by the artist, one of which changes weekly for reasons of preservation.

John White Abbott, British, 1764–1851

Loch Long from Hills near Arrochar, Scotland at 5 in the Morning, 1791

Watercolor with pen and gray ink, over graphite, on cream wove paper

18.8 x 24 cm (7 3/8 x 9 7/16 in.)

Princeton University Art Museum. Museum purchase, Surdna Fund (2017-216)



Domenico Campagnola, Italian, ca. 1500–1564

Autumn and Winter

Pen and brown ink on beige laid paper

25.1 x 39.8 cm (9 7/8 x 15 11/16 in.)

Princeton University Art Museum. Gift of Frank Jewett Mather Jr. (x1946-82)



Annibale Carracci, Italian, 1560–1609

River landscape with three boats, ca. 1600

Pen and brown ink on tan laid paper

19.4 x 27.1 cm (7 5/8 x 10 11/16 in.)

Princeton University Art Museum. Gift of Frank Jewett Mather Jr. (x1944-276)



Paul Cézanne, French, 1839–1906

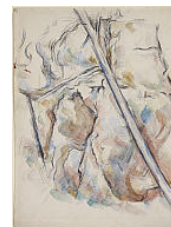
Pine Tree in Front of the Caves above Château Noir, ca. 1900

Watercolor and graphite on cream wove paper

46.5 x 35.5 cm (18 5/16 x 14 in.)

Princeton University Art Museum. Anonymous gift (x1941-166)

On view through May 13, 2018



Paul Cézanne, French, 1839–1906

House in Provence, 1890–94

Watercolor and graphite on cream wove paper

43.7 x 54 cm. (17 3/16 x 21 1/4 in.)

The Henry and Rose Pearlman Foundation on long term loan to the Princeton University Art Museum

On view the week of April 9, 2018



Paul Cézanne, French, 1839–1906

Cistern in the Park of Château Noir, 1895–1900

Watercolor and graphite on cream wove paper

50.6 x 43.4 cm. (19 15/16 x 17 1/16 in.)

76 x 67.5 cm. (29 15/16 x 26 9/16 in.) (framed)

The Henry and Rose Pearlman Foundation on long term loan to the Princeton University Art Museum

On view the week of April 23, 2018



Paul Cézanne, French, 1839–1906

Rocks at Bibémus, ca. 1887–90

Watercolor and graphite on cream laid paper

45.9 x 31.8 cm. (18 1/16 x 12 1/2 in.)

Chain Lines (vertical): 2.7 cm (1 1/16 in.)

The Henry and Rose Pearlman Foundation on long term loan to the Princeton University Art Museum

On view the week of March 12, 2018



Paul Cézanne, French, 1839–1906

Forest Interior (recto); Trees and House (verso), ca. 1890

Watercolor and graphite, with touches of gouache, on cream wove paper
32.2 x 48.9 cm. (12 11/16 x 19 1/4 in.)

The Henry and Rose Pearlman Foundation on long term loan to the Princeton University Art Museum

On view the week of February 19, 2018 (recto); On view the week of April 30, 2018 (verso)



Paul Cézanne, French, 1839–1906

Path, Trees, and Walls, ca. 1900

Watercolor and traces of graphite on cream wove paper
46.7 x 31.4 cm. (18 3/8 x 12 3/8 in.)

The Henry and Rose Pearlman Foundation on long term loan to the Princeton University Art Museum

On view the week of March 19, 2018



Paul Cézanne, French, 1839–1906

Undergrowth, ca. 1900–04

Watercolor and graphite on cream wove paper
31.2 x 49.1 cm. (12 5/16 x 19 5/16 in.)

The Henry and Rose Pearlman Foundation on long term loan to the Princeton University Art Museum

On view the week of March 5, 2018



Paul Cézanne, French, 1839–1906

Chemin des Lauves: The Turn in the Road, 1904–06

Watercolor and graphite on cream wove paper
47.9 x 58.6 cm. (18 7/8 x 23 1/16 in.)

The Henry and Rose Pearlman Foundation on long term loan to the Princeton University Art Museum

On view the week of April 16, 2018



Paul Cézanne, French, 1839–1906

Trees and Cistern in the Park of Château Noir, 1900–1902

Watercolor and graphite on cream wove paper
47.8 x 31.4 cm. (18 13/16 x 12 3/8 in.)

The Henry and Rose Pearlman Foundation on long term loan to the Princeton University Art Museum

On view the week of March 26, 2018



Paul Cézanne, French, 1839–1906

Mont Sainte-Victoire, 1902–1906

Watercolor and graphite on cream wove paper
31.9 x 47.6 cm. (12 9/16 x 18 3/4 in.)

The Henry and Rose Pearlman Foundation on long term loan to the Princeton University Art Museum

On view the week of February 26, 2018



Paul Cézanne, French, 1839–1906

Trees Forming an Arch, ca. 1900

Watercolor and graphite on cream wove paper
60.2 x 45.8 cm. (23 11/16 x 18 1/16 in.)

The Henry and Rose Pearlman Foundation on long term loan to the Princeton University Art Museum

On view the week of May 7, 2018



Paul Cézanne, French, 1839–1906

Forest Path, ca. 1904–06

Watercolor and graphite on cream wove paper

45.5 x 63 cm. (17 15/16 x 24 13/16 in.)

The Henry and Rose Pearlman Foundation on long term loan to the Princeton University Art Museum

On view the week of April 2, 2018



Gherardo Cibo, Italian, 1512–1600

Rocky Island, after 1534

Pen and brown ink on beige laid paper

23.2 x 30.3 cm. (9 1/8 x 11 15/16 in.)

Princeton University Art Museum. Gift of Frank Jewett Mather Jr. (x1941-152)



Gherardo Cibo, Italian, 1512–1600

Landscape with a Winding Stream and a Mill, 1569–70

Pen and brown ink, brown wash, heightened with white gouache on blue laid paper

13.8 x 21.8 cm (5 7/16 x 8 9/16 in.)

Princeton University Art Museum. Gift of Mrs. George Rowley in memory of Professor George Rowley (x1966-53)



Jean-Baptiste-Camille Corot, French, 1796–1875

The Great Birch: Souvenir of Ariccia, 1871–72

Charcoal on gray-green wove paper

27.1 x 23.3 cm. (10 11/16 x 9 3/16 in.)

Princeton University Art Museum. Gift of Frank Jewett Mather Jr. (x1941-97)



David Cox, English, 1783–1859

Mountainous Landscape, North Wales, late 1840s–early 1850s

Watercolor and black chalk on two joined sheets of heavy oatmeal wove paper

21.6 x 64.6 cm (8 1/2 x 25 7/16 in.)

Princeton University Art Museum. Museum purchase, Surdna Fund (2017-217)



Eugène Cuvelier, French, 1837–1900

Forest of Fontainebleau, ca. 1860

Albumen print

25.8 x 34.1 cm. (10 3/16 x 13 7/16 in.)

Princeton University Art Museum. Museum purchase, gift of Mr. C. David Robinson, Class of 1957, and Mrs. C. David Robinson (x1985-38)



Jan van Doetechum the Elder, Dutch, active 1554–after 1600

Lucas A. van Doetechum, Dutch, ca. 1554–before 1584

after Pieter Bruegel the Elder, Flemish, ca. 1525–1569

Published by Hieronymus Cock, Netherlandish, 1507–1570

Rustic Cares (Solicitudo Rustica), ca. 1555–56

Etching with engraving

plate (sheet trimmed to plate): 32.1 x 42.8 cm

Princeton University Art Museum. Bequest of Junius S. Morgan, Class of 1888 (x1938-61)



Albrecht Dürer, German, 1471–1528

The Cannon, 1518

Etching

plate (sheet trimmed to plate): 21.5 × 32 cm (8 7/16 × 12 5/8 in.)

Princeton University Art Museum. Museum purchase, Laura P. Hall Memorial Fund (x1950-15)



Constant Alexandre Famin, French, 1827–1888

In the Forest of Fontainebleau, ca. 1874

Albumen print

31.1 × 23.4 cm (12 1/4 × 9 3/16 in.)

mount: 49.3 × 35.1 cm (19 7/16 × 13 13/16 in.)

Princeton University Art Museum. Museum purchase, gift of the Florence Gould Foundation (x1994-50)



Thomas Gainsborough, English, 1727–1788

Wooded landscape with figures, sheep, and cottage, ca. 1785

Black chalk, gray wash, heightened with white gouache on cream laid paper

27.5 × 37.1 cm (10 13/16 × 14 5/8 in.)

Princeton University Art Museum. Museum purchase, Surdna Fund and John Maclean and Gertrude Magie Fund (x1989-34)



possibly Guercino (Giovanni Francesco Barbieri), Italian, 1591 - 1666

Mountainous landscape with a dammed river, a town, and figures

Pen and brown ink on cream laid paper

25.5 × 40.7 cm. (10 1/16 × 16 in.)

Princeton University Art Museum. Bequest of Dan Fellows Platt, Class of 1895 (x1949-16)



W.H. Harrison, French, active 19th century

Forest of Fontainebleau, ca. 1860–70

Albumen print, mounted to board

17.8 × 19.3 cm. (7 × 7 5/8 in.)

mount: 44.2 × 31.3 cm. (17 3/8 × 12 5/16 in.)

Princeton University Art Museum. Museum purchase, anonymous gift (x1991-7)



William Drooke Harrison, French, active 1860–1893

Forest of Fontainebleau, ca. 1870

Albumen print

19.4 × 19.7 cm. (7 5/8 × 7 3/4 in.)

mount: 44.3 × 31.2 cm (17 7/16 × 12 5/16 in.)

Princeton University Art Museum. Museum purchase, gift of William J. Salman, Class of 1955 (x1986-26)



Claude Lorrain, French, 1604/5–1682

Classical Landscape with Carlo, Ubaldo, and the Magician, ca. 1669

Pen and brown ink, brown and gray wash, heightened with white gouache on beige wove paper
17.2 x 23.3 cm. (6 3/4 x 9 3/16 in.)

Princeton University Art Museum. Gift of Frank Jewett Mather Jr. (x1947-27)



David Lucas, British, 1802–1881

after John Constable, British, 1776–1837

The Cornfield, 1832–34

Mezzotint

image: 57.3 x 49.2 cm. (22 9/16 x 19 3/8 in.)

sheet: 70 x 55 cm. (27 9/16 x 21 5/8 in.)

frame: 86 x 74.5 x 2.6 cm (33 7/8 x 29 5/16 x 1 in.)

Princeton University Art Museum. Museum purchase, Surdna Fund (2004-3)



Rembrandt van Rijn, Dutch, 1606–1669

Landscape with Thatched Cottage, 1641

Etching

plate: 12.8 x 32.1 cm (5 1/16 x 12 5/8 in.)

sheet: 13.5 x 32.7 cm. (5 5/16 x 12 7/8 in.)

Princeton University Art Museum. Museum purchase, Laura P. Hall Memorial Fund (x1960-74)



Jacob van Ruisdael, Dutch, 1628–1682

The Cottage on the Hill, ca. 1660

Etching

plate: 19.6 x 28.1 cm. (7 11/16 x 11 1/16 in.)

sheet: 20.6 x 29.1 cm (8 1/8 x 11 7/16 in.)

Princeton University Art Museum. Gift of Junius S. Morgan, Class of 1888 (x1934-530)



Jacob van Ruisdael, Dutch, 1628–1682

Two Farmers with Their Dog, ca. 1660

Etching

sheet trimmed to plate: 18.6 x 27.4 cm. (7 5/16 x 10 13/16 in.)

Princeton University Art Museum. Gift of Junius S. Morgan, Class of 1888 (x1935-1489)



John Ruskin, British, 1819–1900

View in the Swiss Alps

Watercolor over graphite on cream laid paper

30.7 x 44.2 cm. (12 1/16 x 17 3/8 in.)

Princeton University Art Museum. Gift of Peter Josten (x1967-94)



Roelandt Savery, Flemish, 1576–1639

Alpine Landscape with Travelers near a Village, 1603–04

Pen and brown ink, gray, blue, brown, and rose washes, over red chalk, on cream laid paper
25.3 x 40.2 cm (9 15/16 x 15 13/16 in.)

Princeton University Art Museum. Museum purchase, Felton Gibbons Fund, and Laura P. Hall Memorial Fund (2011-164)



Jean Antoine Watteau, French, 1684–1721

Landscape with a Road Bordered by Trees

Red chalk on cream laid paper

18.3 x 32.6 cm. (7 3/16 x 12 13/16 in.)

Princeton University Art Museum. The John B. Elliott, Class of 1951, Collection (1998-870)



Joseph Wright of Derby, English, 1734–1797

Entrance to the Dove Holes, Derbyshire, 1773

Brush with gray and black wash over graphite on cream laid paper

34.3 x 52.7 cm (13 1/2 x 20 3/4 in.)

Princeton University Art Museum. Museum purchase, Surdna Fund and Fowler McCormick, Class of 1921, Fund (2009-24)

